

THE BODY POLITIC

The 7th PCSR Psychotherapy
& Politics conference

Sat 10th May 2014, 10am-5pm

NCVO, London, N1 9RL

Price: £90/£80/£50

Full price/PCSR member/low and un-waged
£10 early bird discount available—see below.



Come and explore how...

- our bodies are shaped by social, political, ecological and economic forces
- we shape our bodies through our thoughts, feelings, beliefs, patterns, actions, allegiances
- our bodies offer connections with the earth and other-than-human and more-than-human life
- we struggle to reclaim our bodies as our own, within the complex networks of power which we inhabit

...and what's all this got to do with being a therapist/client?

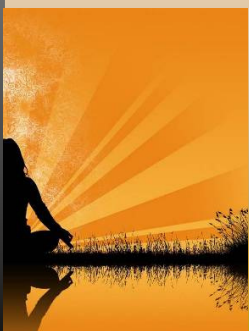
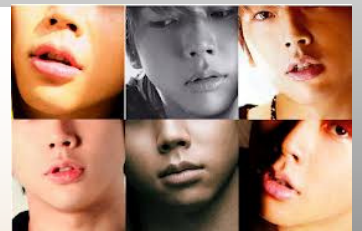
The conference will include: **Keynotes** from Relational Body Psychotherapists Shoshi Asheri and Nick Totton, a diverse programme of **workshops**, the chance to meet other interested practitioners and to find out more and/or join **PCSR**—Psychotherapists and Counsellors for Social Responsibility (<http://pcsr-uk.ning.com/>)

Information and Booking

Information and booking. For booking information please email: Sissy Lykou : thebodypoliticpcsr@gmail.com

Costs. £90 full price / £80 for PCSR members / £50 for those on a low wage/unwaged. Early bird discount of £10 off the rates above will be available until 15th February—please indicate the amount you're paying on the booking form. Cost includes refreshments but not lunch.

Cancellations: Up to 15th February 100% of deposits will be reimbursed, from 16th February 50% of deposits will be reimbursed. From 24th March no deposits will be reimbursed.



Membership information. For more information about PCSR, including becoming a member—so you can register for this conference at a member's rate—please visit: <http://pcsr-uk.ning.com/>

Workshops. If you would be interested in voluntarily offering a workshop on a related body politic theme, please email Kamalamani info@kamalamani.co.uk by 28th February 2014.

Accessibility. Our aim is for this conference to be as accessible as possible. Please let us know at the time of booking whether you have any particular requirements. The venue is fully wheelchair accessible, parking is available by prior arrangement and there is an induction loop.

Venue information and how to find NCVO please visit: www.ncvo-vol.org.uk/contact